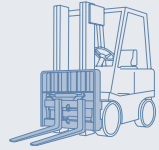


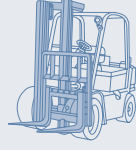
Optional Items

- **FORK (L x W x T)(in)**
- 110D-7E**
3.0 x 7.9 x 47.2 / 3.0 x 7.9 x 53.1 / 3.0 x 7.9 x 59.1 / 3.0 x 7.9 x 65.0 / 3.0 x 7.9 x 70.9 / 3.0 x 7.9 x 82.7 / 3.3 x 7.9 x 94.5 / 3.3 x 7.9 x 102.4
- 130D-7E**
3.3 x 7.9 x 47.2 / 3.3 x 7.9 x 53.1 / 3.3 x 7.9 x 59.1 / 3.3 x 7.9 x 65.0 / 3.3 x 7.9 x 70.9 / 3.3 x 7.9 x 82.7 / 3.5 x 7.9 x 94.5 / 3.5 x 7.9 x 102.4
- 140D-7E**
3.3 x 7.9 x 47.2 / 3.3 x 7.9 x 53.1 / 3.5 x 7.9 x 59.1 / 3.5 x 7.9 x 65.0 / 3.7 x 7.9 x 70.9 / 3.7 x 7.9 x 82.7 / 3.7 x 7.9 x 96.1 / 3.9 x 7.9 x 102.4
- 160D-7E**
3.5 x 7.9 x 47.2 / 3.5 x 7.9 x 53.1 / 3.5 x 7.9 x 59.1 / 3.5 x 7.9 x 65.0 / 3.7 x 7.9 x 70.9 / 3.7 x 7.9 x 82.7 / 3.7 x 7.9 x 96.1 / 3.9 x 7.9 x 102.4
- **MAST** : SIMPLEX MAST / TRIPLEX MAST / Duplex Mast(14/16 ton only)
- **OVER SHOE** : 70.9 / 78.7 / 86.6 / 94.5 / 102.4
- **MCV** : 4 - SPOOL / 5 - SPOOL
- **SEAT** : NON HEAT / HEAT
- **BEACON LAMP** : AMBER / RED / BLUE
- **FORK POSITIONER** :
- **INTEGRAL SIDE SHIFT**
- **INTEGRAL SIDE SHIFT + FORK POSITIONER**
- **HYDRAULIC LINE** : 3 - SPOOL / 4 - SPOOL / 5 - SPOOL
- **SOLID TIRE**
- **PNEUMATIC TIRE** : LUG / SMOOTH(14/16 ton Only)
- **HEAD GUARD**
- **Sliding Carriage & Fork**
- **Separator holder**

Various Attachments



Fork Positioner



Side Shift



110D/130D/140D/160D -7E



Some of the photos may include optional equipment.

We build a better future

North America only

FORKLIFT TRUCKS **Environmentally Friendly**

110D/130D/140D/160D-7E

HYUNDAI
HEAVY INDUSTRIES CO.,LTD.
FORKLIFT

Head Office (Sales Office)
14th FL., HYUNDAI BLDG. 140-2, KYE-DONG, JONGNO-GU, SEOUL, KOREA 110-793
TEL: (82) (2) 746-4505, 4609 FAX: (82) (2) 746-7444-7445

Americas Operation: Hyundai Construction Equipment Americas, Inc.
6100 ATLANTIC BOULEVARD NORCROSS GA 30071 U.S.A TEL: (1)847-678-823-7802 FAX: (1)847-678-823-7778

Europe Operation: Hyundai Heavy Industries Europe N.V.
VOSSENDAAL 11, 2440 GEEL, BELGIUM TEL: (32) 14-56-2200 FAX: (32) 14-59-3405

PLEASE CONTACT

www.hyundai-ce.com

2011. 11 Rev.2

HYUNDAI
HEAVY INDUSTRIES CO.,LTD.

NEW criterion of Big Forklift Truck

Hyundai introduces a new line of 7E-series diesel forklift trucks. Excellent power and performance makes your business more profitable.

Excellent



Cruise Control



Instrument Switch Panel



Air Conditioner & Heater



Rear View Camera



Rear View Monitor



ESL(Engine Start Limit)



■ Some of the photos may include optional equipment.

Ability of best, the new master on the job-site!

Smooth running, efficient and ergonomically designed, 110D/130D/140D/160D-7E series are made to meet your needs.



Powerful Engine

Cuinins QSB6.7 Engine

The six cylinders turbo-charged engine is built for power, reliability and economy. This engine meets EPA Tier 3 and EU stage IIIA emission regulation.

162HP/2,200rpm

74.6kgf-m/1,400rpm



Engine Control Mode

According to operating load, the operator can select engine mode by changing side panel switch.

STD Mode : Fuel reduction mode for light-duty operating load

POWER Mode : Heavy-duty or operating at slope



Adjustable Engine Low Idle RPM

While engine runs, low idle rpm can be increased by unit of 25rpm and it keeps previously set rpm when engine restarts.

Full-automatic Transmission

Full-automatic transmission gives easy, convenient handling and soft, smooth shifting. The operator can select two kinds of automatic modes. (1st→3rd, 2nd→3rd)



Cruise Control

It offers the ability to automatically maintain a desired engine speed with no accelerator pedal input and reduce fuel consumption.



Transmission Control Switch



Excellent Night Work

- Variety position of work lamp provides the operator more comfortable and safe operating environments.

- Front : fender(2), mast(2) - Rear : cab(2)



High Power Low Noise



■ Some of the photos may include optional equipment.

Faster Travel Speed & Better Gradability

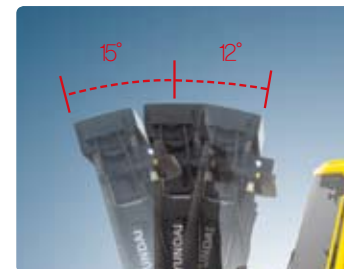
The powerful high-output engine provides greater acceleration, better gradability and faster travel speed on any tough terrains or slopes.

Gradability(Loaded)

110D-7E : 45.4 % 140D-7E : 37.0%
130D-7E : 41.0% 160D-7E : 31.4%

Travel Speed(Unloaded)

110D-7E : 20.96mph
130D-7E : 20.56mph
140D-7E : 20.00mph
160D-7E : 20.00mph



Increased Mast Tilting Angle

Utilizing the mast tilting angle of 15 degrees forward and 12 degrees backward, the operator can perform loading and unloading jobs safely and rapidly.



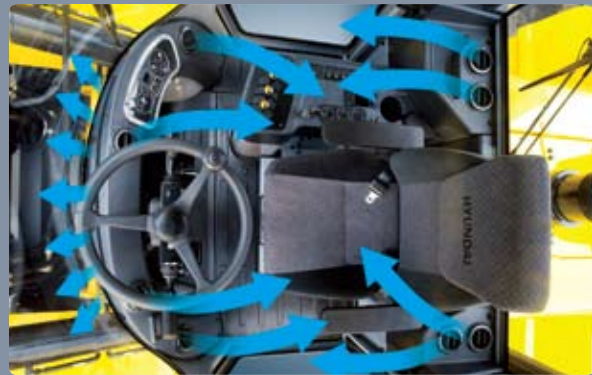
Ergonomic driving space design!

A design based on human engineering relieves fatigue and increases operator's efficiency.

Operator Friendly Gauges and Water-resistant Monitor Panel



Easily Adjustable Suspension Seat
An attractive and adjustable seat, based on a human engineering design, provides great comfort, safety and durability. (Head Rest - option)



High-output Air Conditioner & Heater
An air conditioner with integrated the condenser is mounted on upper side of the cabin to make a wide room in the cabin. And an air conditioner with high-output and heater always provide you comfortable environment when you work.



Some of the photos may include optional equipment.



ESL(Engine Start Limit) / Rear View Camera Monitor
Engine starting is possible after password verifying, when password is not correct, intercepts the fuel injection of engine. Whether to use ESL can be selected from the menu of the monitor. The rear view camera makes the operation more easy and convenient. And it supports 4 camera channels.



Centralized Instrument Switch Panel



USB MP3 Player & Remote Control



Hands Free Socket



Quick Response of Operating Control Levers
Only minimal operator's effort is required for precise, safe and productive control. (3-Lever : standard / 4· 5-Lever : option)



Ergonomically Positioned Pedals
Based on human engineering ; the accelerator, brake and inching pedals are optimally positioned for the operator's convenience.



Adjustable Steering Column

Steering handle is adjustable depending on the operator's body shape. Adjustability of steering column makes you more comfortable.



Danger-free through high durability!

Safety and durability are priorities in design of the equipment.



Up-to-date Cooling System

The minimum fuel consumption and low noise are available by applying hydraulic cooling fan sensing intake air temperature, transmission oil temperature, coolant temperature and hydraulic temperature.



OPSS (Operator Presence Sensing System)

Control of mast tilting, lifting and lowering is not possible through operation of the appropriate control when the operator is not in the normal position.



Durable Drive Axle

The hypoid type planetary reduction drive axle smoothly delivers desired torque to the drive wheels.



Auto Parking

The parking brake is engaged automatically when the transmission is neutral and the operator leaves the seat.



Some of the photos may include optional equipment.



Wet Disc Brake System

The wet disc brake system is virtually maintenance free and is enclosed to protect from dust and water.



Fitted Protector for Hub Bolts

Durability has improved by applying protector for preventing bolts breakage. (Easy parts supply due to the wheel in coinon with front wheel)



Cylinder Guard

This guard helps to prevent possible damage from any foreign material.



Grease Fittings

Grease fittings are installed for fast access to steering axle center pin when doing your service checks.



Highly Durable Mast & Carriage Side Roller

Side roller with great durability for mast and carriage is included.



Highly Durable Carriage

The carriage is very strong cause of applying the high tensile structural steel which has an excellent durability. Work at the narrow space is easy because the width of carriage is narrower than overall width of the vehicle.



Large Footboard & Handle

Wide "open" step offers convenience and safety when entering and exiting the truck.



Centralized design for easy service!

An ideal arrangement of component parts ensures easy access and convenience for maintenance.



Large Engine Hood

Highly accessible engine compartment assures fast and efficient maintenance.



Easy Change Air Cleaner

This air filter is readily accessible for cleaning or replacement.



Cabin Tilting Automatic System

Cabin tilting automatic system makes servicing of all power train components quick and easy. An electrically assisted hydraulic actuated cylinder tilts operator cabin to left side about 65 degrees for easy access to inside of truck components.



Cabin Air Fresh Filter

The internal pressure is maintained to be slightly higher than that of outside to exclude dust and to reduce noise levels.



Some of the photos may include optional equipment.



Compact fuse Box for Easy Inspection



Mechanic Friendly Fuel Filter Replacement

Highly accessible engine compartment allows for quick replacement of filters.



Electrically Monitored Air Filter

Air cleaner sensor alerts the operator of a clogged air filter and allows replacement before damage.



Automatic Self Locking Gas Spring

Engine compartment hood is safely opened by a self locking gas spring.



Master Switch

A master switch disconnects the battery power to protect the electrical system from excess electrical drainage.



Large Tool Box



Pressure Gauge Port



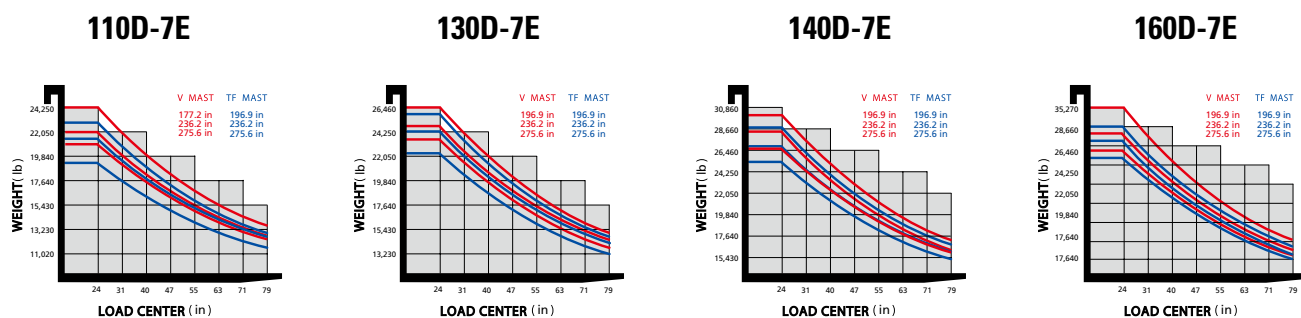
Easy Maintenance Oil Check

Mast Specification

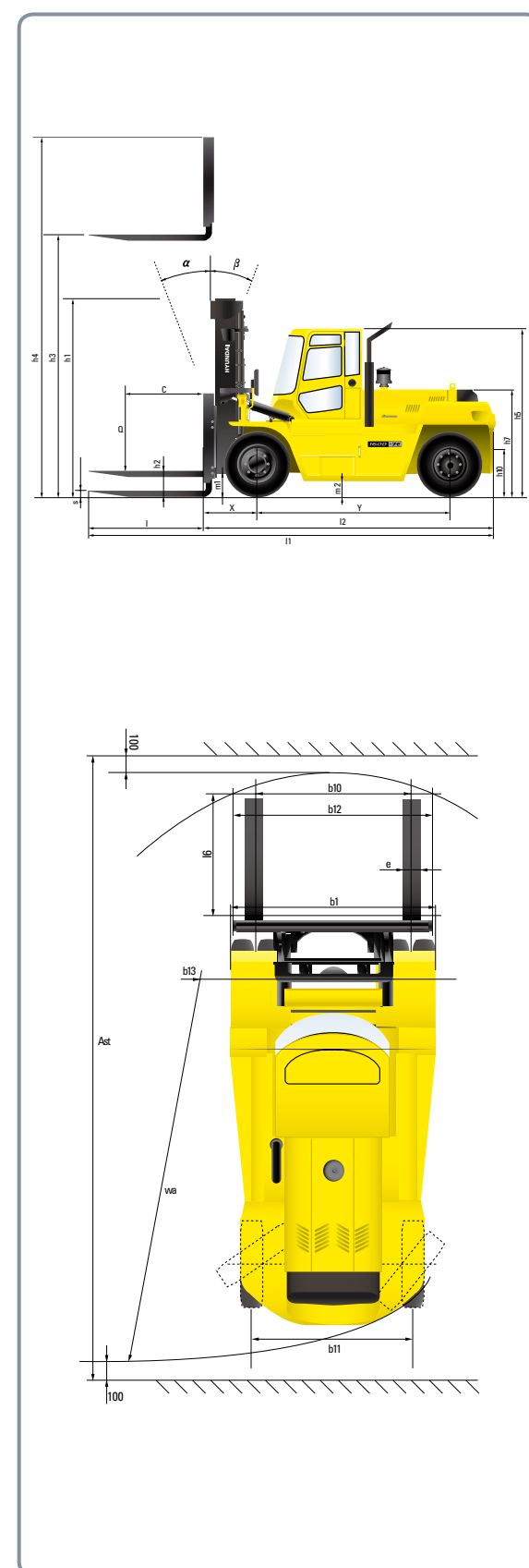
Mast Type	Maximum Fork Height (in)	Overall Height Lowerd (in)	Tilt Angle	Load Capacity (24in LC)(lb)		Truck Weight Unloaded (lb)		
				110D/130D-7E	110D-7E	130D-7E	110D-7E	130D-7E
2-Stage Limited Free Lift	V300	118.3	118.1	15 / 12	24,200	28,600	34,661	36,215
	* V330	130.1	124.0	15 / 12	24,200	28,600	34,829	36,383
	V350	138.0	128.0	15 / 12	24,200	28,600	34,936	36,491
	V400	157.7	139.8	15 / 12	24,200	28,600	35,494	37,048
	V450	177.4	149.6	15 / 12	24,200	27,720	35,770	37,324
	V500	197.0	161.4	15 / 12	24,200	26,840	36,098	37,653
	V550	216.7	171.3	15 / 12	24,200	25,960	36,608	38,162
	V600	236.4	183.1	15 / 12	23,320	25,080	36,943	38,497
3-Stage Full Free Lift	V650	256.1	192.9	15 / 12	22,660	24,420	37,236	38,790
	V700	275.8	202.8	15 / 12	22,000	23,760	37,525	39,079
	TF440	173.4	116.1	10 / 10	24,200	27,060	36,951	38,508
	TF470	185.2	120.1	10 / 10	24,200	26,620	37,108	38,664
	TF500	197.0	124.0	10 / 10	24,200	25,960	37,264	38,821
	TF550	216.7	130.6	10 / 10	23,320	25,300	37,633	39,189
	TF600	236.4	137.2	10 / 10	22,660	24,420	37,893	39,449
	TF650	256.1	143.7	10 / 10	21,120	23,760	38,365	39,921
TF700	275.8	150.3	10 / 10	19,140	23,100	38,627	40,183	

Mast Type	Maximum Fork Height (in)	Overall Height Lowerd (in)	Tilt Angle	Load Capacity (24in LC)		Truck Weight Unloaded (lb)		
				140D/160D-7E	140D-7E	160D-7E	140D-7E	160D-7E
2-Stage Limited Free Lift	V295	116.1	116.1	15 / 12	30,800	35,200	39,947	41,837
	V300	118.5	128.0	15 / 12	30,800	35,200	40,309	42,198
	* V330	130.3	133.9	15 / 12	30,800	35,200	40,517	42,406
	V350	138.2	137.8	15 / 12	30,800	35,200	40,615	42,505
	V400	157.9	147.6	15 / 12	30,800	35,200	41,248	43,138
	V450	177.6	157.5	15 / 12	30,800	34,980	41,590	43,479
	V500	197.2	169.3	15 / 12	30,800	34,980	41,991	43,881
	V550	216.9	179.1	15 / 12	29,920	33,440	42,584	44,474
3-Stage Full Free Lift	V600	236.6	190.9	15 / 12	29,040	32,120	42,985	44,875
	V650	256.3	201.8	15 / 12	28,160	31,020	43,351	45,241
	V700	276.0	211.6	15 / 12	27,500	30,360	43,684	45,574
	TF395	156.1	116.1	10 / 10	30,800	34,320	42,736	44,652
	TF450	177.3	123.2	10 / 10	30,580	33,660	43,091	45,007
	TF500	197.0	129.8	10 / 10	29,700	32,780	43,477	45,393
	TF550	216.7	136.4	10 / 10	28,380	31,900	43,881	45,796
	TF600	236.4	143.0	10 / 10	27,720	31,020	44,222	46,127
TF650	256.1	149.5	10 / 10	26,840	30,140	44,837	46,753	
TF700	275.7	156.1	10 / 10	26,180	29,480	45,153	47,068	

Load Capacity



Dimension



Specification

Identification						
1.1	Manufacturer	Hyundai	Hyundai	Hyundai	Hyundai	
1.2	Manufacturer's type designation	110D-7E	130D-7E	140D-7E	160D-7E	
1.3	Drive: electric (battery or mains),diesel,petrol,fuel gas,manual	DIESEL	DIESEL	DIESEL	DIESEL	
1.4	Type of operation:hand,pedestrian,standing,seated,order-picker	seated	seated	seated	seated	
1.5	Load capacity / rated load	Q (lb)	24,250	28,660	30,865	35,274
1.6	Load center distance	c (in)	24	24	24	24
1.8	Load distance, center of drive axle to fork	x(in)	29.7	29.9	32.7	32.9
1.9	Wheelbase	y(in)	114.2	114.2	129.9	129.9
Weights						
2.1	Service weight	lb	34,829	36,383	40,517	42,406
2.2	Axle loading, loaded front/rear	lb	52,286 / 6,793	58,867 / 6,176	64,705 / 6,676	70,986 / 6,694
2.3	Axle loading, unloaded front/rear	lb	16,704 / 18,125	16,766 / 19,617	20,466 / 20,051	20,373 / 22,033
Wheels, Chassis						
3.1	Tires:solid rubber, superplastic, pneumatic, polyurethane	Pneumatic	Pneumatic	Pneumatic	Pneumatic	
3.2	Tires size, front (width x Φ)	10.00 - 20	10.00 - 20	12.00 - 20	12.00 - 20	
3.3	Tires size, rear (width x Φ)	10.00 - 20	10.00 - 20	12.00 - 20	12.00 - 20	
3.5	Wheels, number front x rear (x=driven wheels)	4 x 2	4 x 2	4 x 2	4 x 2	
3.6	Track width, front	b10 (in)	72.5	72.5	72.5	
3.7	Track width, rear	b11 (in)	75.2	75.2	77.2	
Basic Dimensions						
4.1	Mast / fork carriage tilt forward / backward (α / β) degrees	degrees	15 / 12	15 / 12	15 / 12	15 / 12
4.2	Lowered mast height	h1 (in)	118.1	118.1	128.0	128.0
4.3	Free lift	h2 (in)	0.0	0.0	0.0	0.0
4.4	Lift height	h3 (in)	118.3	118.3	118.5	118.5
4.5	Extended mast height	h4 (in)	175.8	175.8	185.4	185.4
4.7	Overhead load guard (cab) height	h5 (in)	114.2	114.2	115.6	115.6
4.8	Seat height / standing height	h7 (in)	67.8	67.8	68.9	68.9
4.12	Coupling height	h10 (in)	23.6	23.6	23.6	23.6
4.19	Overall length	l1 (in)	224.0	224.2	246.1	246.3
4.20	Length to face of forks	l2 (in)	170.9	171.1	192.9	193.1
4.21	Overall width	b1 (in)	96.5	96.5	99	99
4.22	Fork dimensions	s / e / l(in)	3.0 x 7.9 x 53.1	3.3 x 7.9 x 53.1	3.3 x 7.9 x 53.1	3.5 x 7.9 x 53.1
4.23	Fork carriage ISO 2328, class / type A,B	Pin Mount	Pin Mount	Pin Mount	Pin Mount	
4.24	Fork-carriage width	b12 (in)	92.8	92.8	98.3	98.3
4.31	Ground clearance, loaded, under mast	m1(in)	10.6	10.6	10.6	10.6
4.32	Ground clearance, centre of wheelbase	m2(in)	13.0	13.0	13.0	13.0
4.33	Aisle width for pallets 1000x1200 crossways	Ast(in)	255.7	255.9	278.9	280.7
4.34	Aisle width for pallets 800x1200 lengthways	Ast(in)	255.7	255.9	278.9	280.7
4.35	Turning radius	Wa(in)	165	165	185.2	186.9
4.36	Smallest pivot point distance	b13(in)	59.7	59.7	68.8	68.8
Performance Data						
5.1	Travel speed, Unloaded	mph	20.96	20.56	20.0	20.0
5.2	Lift speed, Loaded/Unloaded	fpm	88.6 / 100.4	84.6 / 100.4	70.9 / 88.6	68.9 / 88.6
5.3	Lowering speed, Loaded/Unloaded	fpm	100.4 / 90.6	100.4 / 90.6	68.9 / 84.6	68.9 / 84.6
5.5	Drawbar pull, Loaded	N	26,753	27,055	27,137	25,545
5.7	Gradient performance, Loaded	%	45.4	41.0	37.0	31.4
5.9	Acceleration time, Loaded/ Unloaded(10m)	sec	-	-	-	-
5.10	Service brake		wet disc	wet disc	wet disc	wet disc
Engine						
6.1	Engine manufacturer / type	Cuinins QSB6.7	Cuinins QSB6.7	Cuinins QSB6.7	Cuinins QSB6.7	
6.2	Engine power acc. to ISO 1585	Hp	162	162	162	162
6.3	Rated speed	1/min	2,200	2,200	2,200	2,200
6.4	No. of cylinder / cubic capacity	/cm³	6 / 6,700	6 / 6,700	6 / 6,700	6 / 6,700
6.5	Fuel consumption acc. to VDI cycle	ℓ /h	11.0	11.0	11.5	11.5
Other Details						
8.1	Type of drive control		Full Auto	Full Auto	Full Auto	Full Auto
8.2	Operating pressure for attachments	bar	150	150	150	150
8.3	Oil volume for attachments	l/min	295	295	295	295
8.4	Sound level at driver's ear according to DIN 12 053	db(A)	82	82	82	82
8.5	Tow coupling, type DIN		-	-	-	-